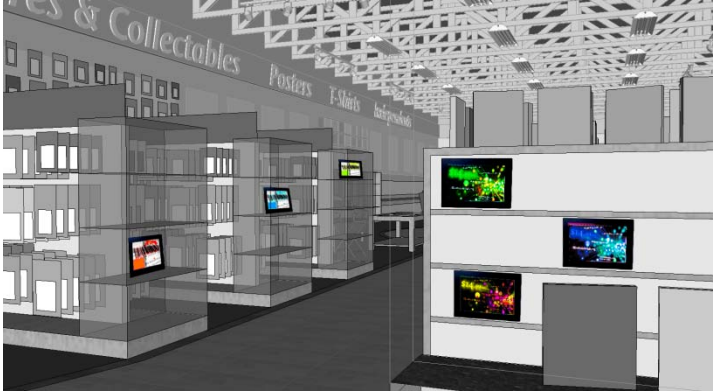


Digital Signboard XDS-101

10" Widescreen Wireless Network Display for Digital Signage



IAdea XDS-101 Digital Signboard is a 10" widescreen, all-in-one digital signage display with dedicated signage features, suitable for commercial applications.

Versatile all-in-one signboard

IAdea digital signboards deliver DVD quality signage content in a compact frame you can place anywhere. The compact unit integrates the media player, high brightness display, expandable local storage, and wireless network. Since the power adapter cable is the only physical connection to the player, it's easy to achieve a clean and professional presentation in tight spaces.

Dedicated signage network features

Auto-play plays your content once power is connected, without the need to manually switch on each device. This lets you use an AC power timer or master switch to turn dozens of screens on or off at once. *Automatic error recovery* (built-in WDT) monitors and corrects for system/playback errors. *Real-time clock* retains the playback schedule, even after extended network and power disruptions. *Automatic NTP (Network Time Protocol) clock adjustment* keeps device clocks in sync.

User friendly scheduling interface

Update content for dozens of screens from a PC over your local network with the easy to use Adfotain Manager Express utility. Quickly publish photos, videos, or music on a weekly schedule. PowerPoint users can also upload slideshows for static display.

SMIL open API for interoperability

IAdea's industry leading W3C SMIL support paves the way for interoperable systems and efficient application development across standards-compliant signboards and media player hardware, available today and tomorrow.

Highlights

- ♦ **Versatile all-in-one signboard**
- ♦ **Dedicated signage network features**
- ♦ **User friendly scheduling interface**
- ♦ **SMIL open API for interoperability**

Suitable for

- ♦ **In-store promotion**
- ♦ **Sealed-in retail display case**
- ♦ **Interior shelf-top decor**
- ♦ **Restaurant table-top**
- ♦ **Museum and library information**

Technical Specifications

Screen Media Standards Support

- Image: JPEG baseline, up to 12 megapixels
- Audio: MPEG L2 or MP3, up to 384Kbps
- Video: MPEG-1 or MPEG-4 ASP, up to 4Mbps (720x400 resolution 16:9 content recommended)

NOTE: MPEG 2 video is NOT supported

User Interface/Scripting Language

- Manager Express configuration utility
- SMIL Open API

Optional Management Solution

- Scala Content Manager 5 Release 5 (player license not included)

Digital Signage Specific Features

- *Auto-play* starts playing scheduled contents automatically when power is re-established
- Automatic error recovery with *built-in WDT*
- *Real-time clock* keeps time for up to 12 hours unplugged
- *Automatic NTP* keeps time and date in sync

Display and Sound

- 10.1" TFT LCD wide aspect ratio
- 320 nits maximum brightness
- 800x480 native resolution
- Built-in stereo speakers 1.5 Wx2

Local Storage

- Internal 2GB local storage (approx. 60 minutes of maximum quality video @4Mbps or thousands of still images)
- Memory expansion port: Compact Flash Card (CF) Type II, Secure Digital Card (SD and SDHC)
- Expansion capacity: Up to 8GB (SDHC/CF)

Network Connectivity and I/O Ports

- Wi-Fi: IEEE 802.11 b/g
- Wi-Fi Security: WPA/WPA2, TKIP/AES
- Ethernet: RJ45 Port via USB dongle (option)
- USB storage host (Type A)
- 3.5mm stereo audio out jack

Supplied Accessories

- Software CD
- Quick start guide
- AC power adapter
- Display stand

Optional Accessories

- VESA mounting kit
- USB to RJ45 Ethernet adapter

Dimensions

Main unit (WxHxD):
271 x 185 x 29 mm / 10.6" x 7.28" x 1.14"

Weight

680 grams / 1.50 pounds

Power

- Rating: 5V 2A

Environmental

- Operating temperature: 0 to 40°C
- Humidity: 5 to 85% @ 40°C, non-condensing

Safety

- UL-approved AC adapter

Certifications

- CE/FCC
- RoHS

Warranty

- 1-year limited parts & labor

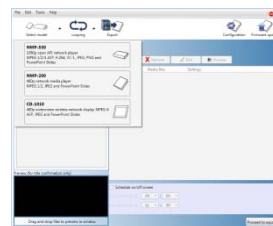
Product Views



Front View



Rear View
(Stand removable)



Adfotain Manager Express
Player configuration utility

Contact

EP-Engineering Oy MediaSolution
PL 115
01801 Klaukkala, FINLAND
p. 09-879 5630, fax 09-879 5448
Email: info@mediasolution.fi
Website: <http://www.mediasolution.fi>

IAdea Corporation (Headquarters)
3F, No. 33, Alley 77, Xing-ai Road
Taipei, Taiwan 114
Phone: +886-2-2791-1110
Fax: +886-2-2791-1170
Email: Sales@IAdea.com

Authorized Reseller

